



Safespace Design Pack - Home

Safespaces change lives. That's what families and professionals tell us about our products. We hope we can help you find the solution you are looking for. This form is designed to help us collect the information we need about the person who will use the Safespace and the room where it will be installed. We will use this information to send you a plan of your Safespace with a quote.

If you have any questions about completing the form please contact us on 01706 816 274 as we are happy to help, or we can complete the form together over the phone.

Five steps to getting a design for your Safespace:

1. Complete details about the needs of the person who will use the Safespace
2. Select the design options you need – we can advise you about these
3. Choose your colour scheme – people tell us light blue is the most calming colour
4. Provide details of height of the room where the Safespace will be sited
5. Draw a plan with the dimensions of the room and anything which protrudes such as radiators etc.

We need **all measurements** requested on the form to ensure that we design your Safespace so that the person using it cannot come into contact with any hard surfaces and that the appropriate gap around it is maintained. Please indicate on the plan if there is any furniture (with dimensions) that needs to remain in the room after the Safespace is installed. It is helpful to send us photographs if the room has any complex features, such as built in cupboards or a chimney breast or a sloping ceiling.

Please post or email the completed form to:

Safespaces (Cornholme) Ltd, 361 Burnley Road, Todmorden, Lancs, OL14 7DH

Email: info@safespaces.co.uk

Tel: **01706 816 274**



CONTACT DETAILS AND INFORMATION REQUIRED

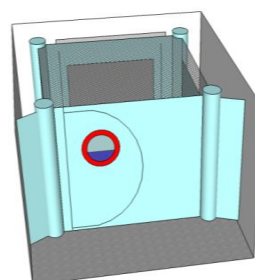
DETAILS OF PERSON REQUESTING QUOTE	
Name	Job title/Role
Address	
Phone	Email
Mobile No	

DETAILS OF PERSON WHO WILL USE THE SAFESPACE	
Parent/Carer's name (if different to above)	Email
Phone	Mobile No
User's Name	Age
Address (location of Safespace)	
Medical condition/s (if any)	
Does client have diagnosis Yes/No State diagnosis	
Does the person the Safespace is for have full or limited mobility? Please tell us if they need or may need hoisting in the future.	
Behaviours	
Sleep patterns/issues	
How do you intend to use the Safespace? E.g. for sleep, sensory space, daytime use etc.?	
Has client had an assessment regarding the Safespace? Yes / No	
Has funding been identified? Yes /No	

Safespace Design Options

1) Safespace Door Options

Choose a Safespace door with (26cms diameter) **pthole**, or larger (79cms x 58cms) **viewing panel**. Doors come with twin zip pullers on the outside of the door with the flat backs of the pullers visible on the inside. Contact us to discuss other options if required.



Standard Door with Porthole

2) Safespace Window Options

On opening windows the zip pullers are on the inside of the Safespace and may need to be secured. Non opening windows have no zip. This would allow the carer to access the room window through the Safespace. Call us if you aren't sure which is the best option to choose.

3) White Wall for Image Projection

A white wall is an excellent background on which to project images. We also supply projector kits & sensory lighting as accessories.

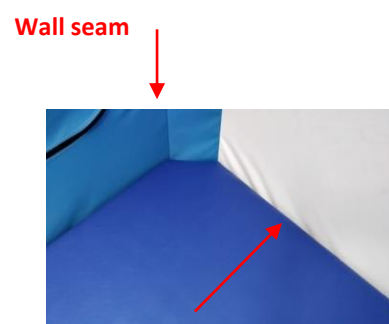
4) Roll-up Wall

This opens up the side of the Safespace and is useful if you need to access fitted wardrobes through the Safespace. Please note that the zip pullers will be on the inside unless requested otherwise.



5) Water resistant seams

For those with continence issues, we can offer water resistant treatment on the seams where the floor and wall meet - select '**floor**', or also on vertical wall seams if continence is a significant issue - select '**floor and wall**'.



6) Safespaces PVC covered mattress/Lycra covered Memory foam mattress

Our robust, waterproof, PVC mattress is designed to fit snugly into the mitred bite resistant corners of the Safespace. The memory foam mattress can have a Lycra cover to give the full benefit of the memory foam, or a PVC cover if the user is inclined to bite. (183cm x 91cm x 20cm) or custom size if required.

7) Tube holes

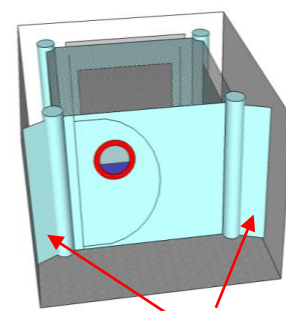
The standard diameter is 2.5cms to accommodate most gastronomy or oxygen tubes. Custom sizes are available but should be kept to a minimum for safety.

8) Removable Window Blinds

Window blinds can be attached with Velcro on the outside of the Safespace so that the carer has control of their use. They are useful to darken the Safespace room or to create a low stimulation environment instantly.

9) Visual Deterrent Panels

A 25cm space is required between the Safespace walls and any hard surfaces such as walls or a radiator. Visual deterrent panels conceal this gap and are recommended for those who have the ability/inclination to enter the gap around the Safespace. They extend from the corners of the Safespace and are fixed to the wall of the room. They are designed as a visual deterrent only and are not a substitute for supervision.



Visual Deterrent
Panels

10) Floor /Wall Fixing brackets

If the floor surface is slippery, such as laminate or any non-carpeted surface, we would recommend that the Safespace is fixed to the floor. Where this is not possible due to e.g. underfloor heating, then wall fixing brackets may be required. Floor /wall fixing is recommended on all floor surfaces where the person using the Safespace is very active.

OPTIONS SELECTED (see Design Options page 3-4 for details)		Please tick
Safespace Door	Door with Porthole	
	Larger viewing panel	
Window	With zip	
	Without zip	
Roll up wall	With viewing panel	
	Without viewing panel	
White wall (for projecting onto)		
Water resistant seams	Seam joining floor to wall	
	Floor plus wall up to ceiling height	
Mattress	High Density Standard PVC covered Single mattress with PVC cover	
	Memory foam single mattress with Lycra or bite resistant PVC cover	
Tube holes required? (state number and contact us to discuss)		
Removable window blinds		
Visual Deterrent Panels		
Sensory equipment	Projector set	
	Fibre optics	
	Soft shapes	
I would like the Safespace to be fixed to the floor		Yes / No/ Unsure
Is there underfloor heating in the room where the Safespace will be installed?		Yes / No/ Unsure
Tell us about any other issues or design features that you would like us to consider:		
<p>Signature: _____ Date: _____</p> <p>Print name: _____</p>		



When choosing colours, please consider how calm or lively an environment you wish to create. Please choose colours for wall, floor, mattress & external corners from the selection below. Please note: If you do not select colours the Safespace will be manufactured in light blue with dark blue floor/mattress.

WALL COLOUR: _____

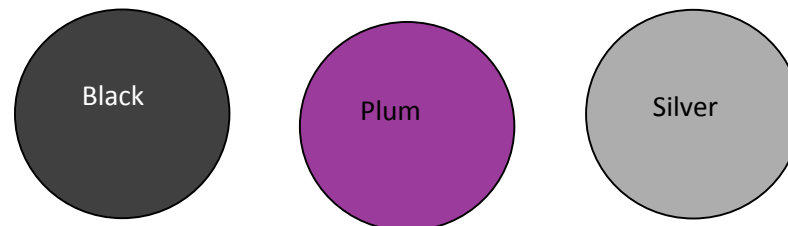


FLOOR COLOUR: _____

PVC MATTRESS COLOUR: _____



LYCRA COLOUR FOR MEMORY FOAM MATTRESS: _____

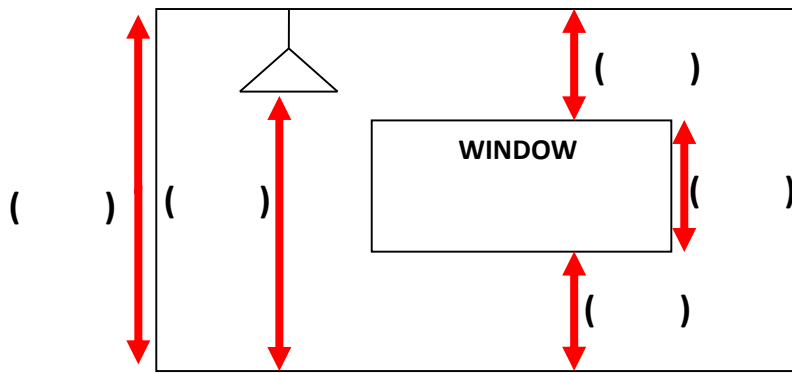
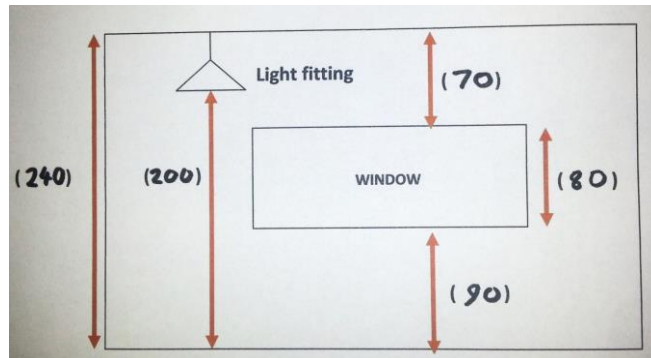


EXTERNAL CORNER COLOUR: _____



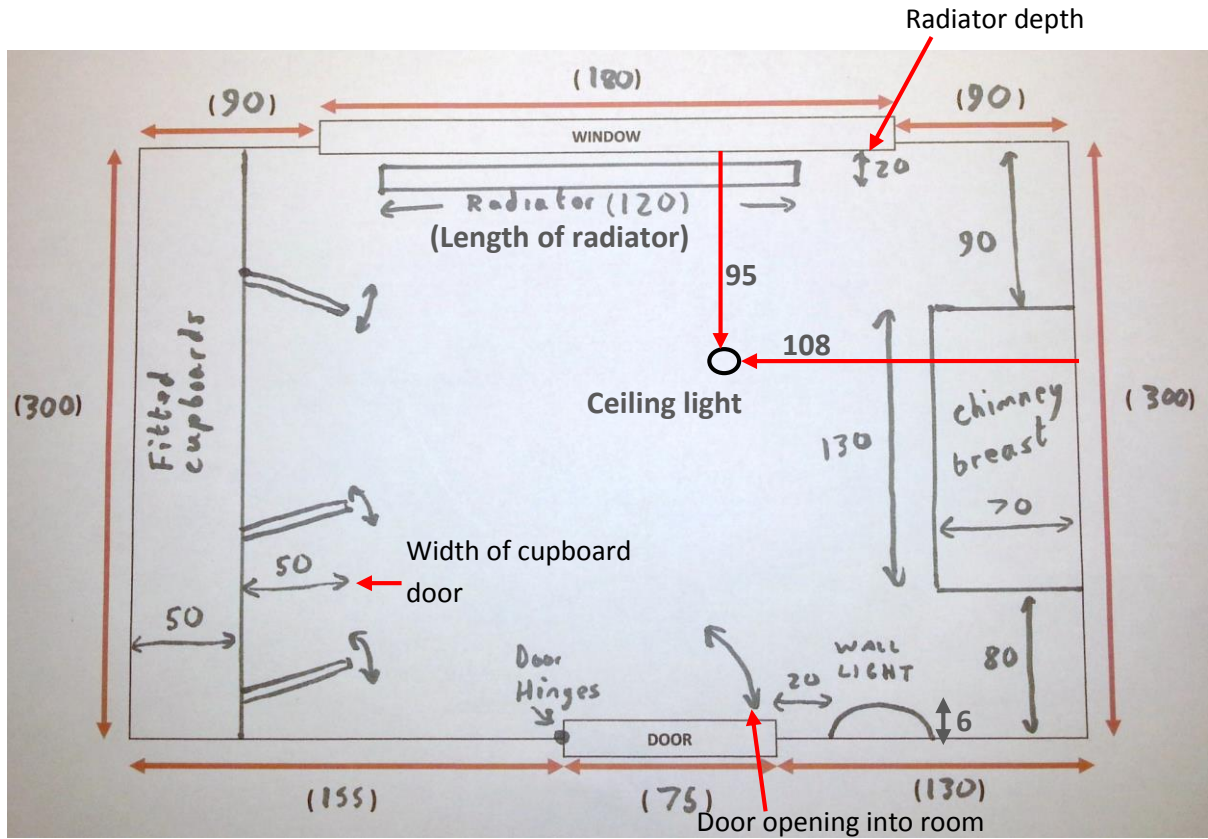
ROOM HEIGHTS

Measure the heights (cm) of the room where the Safespace will be situated and enter the measurements in the brackets. See example below.



ROOM PLAN

Using the blank plan on the next page, follow the instructions and complete the plan. A completed example is shown below. All measurements are in centimetres





BLANK ROOM PLAN TEMPLATE

On your plan, draw and label all doors (marking which side the hinges are on & direction of opening). Then add windows, radiators/wall heaters, fitted furniture, wall-mounted TVs (including depth), loft hatch and wall/ceiling lights. Please show on plan whether door opens inward or outward.

1. Measure the room and put the measurements (cm) in the relevant brackets – see worked example. All wall measurements should be taken along the floor between the skirting boards or surface pipe-work and be in centimetres (cm).
2. Measure all the features listed above and add the measurements to the plan.
3. Show position of ceiling light fitting in room including distance from walls (see example)



1. Radiator depth _____
2. Doors open: inwards /
outwards (please circle)